

# Estill County High School Phase 7 Renovations

## Irvine, Kentucky

for the

### Estill County Board of Education

253 Main St, Irvine, Kentucky 40336

p 606.723.2181

BG # 21-055

RTA # 2025



101 old lafayette avenue  
lexington, kentucky 40502  
p 859.254.4018  
www.rosstarrant.com

# enhancing education through great design

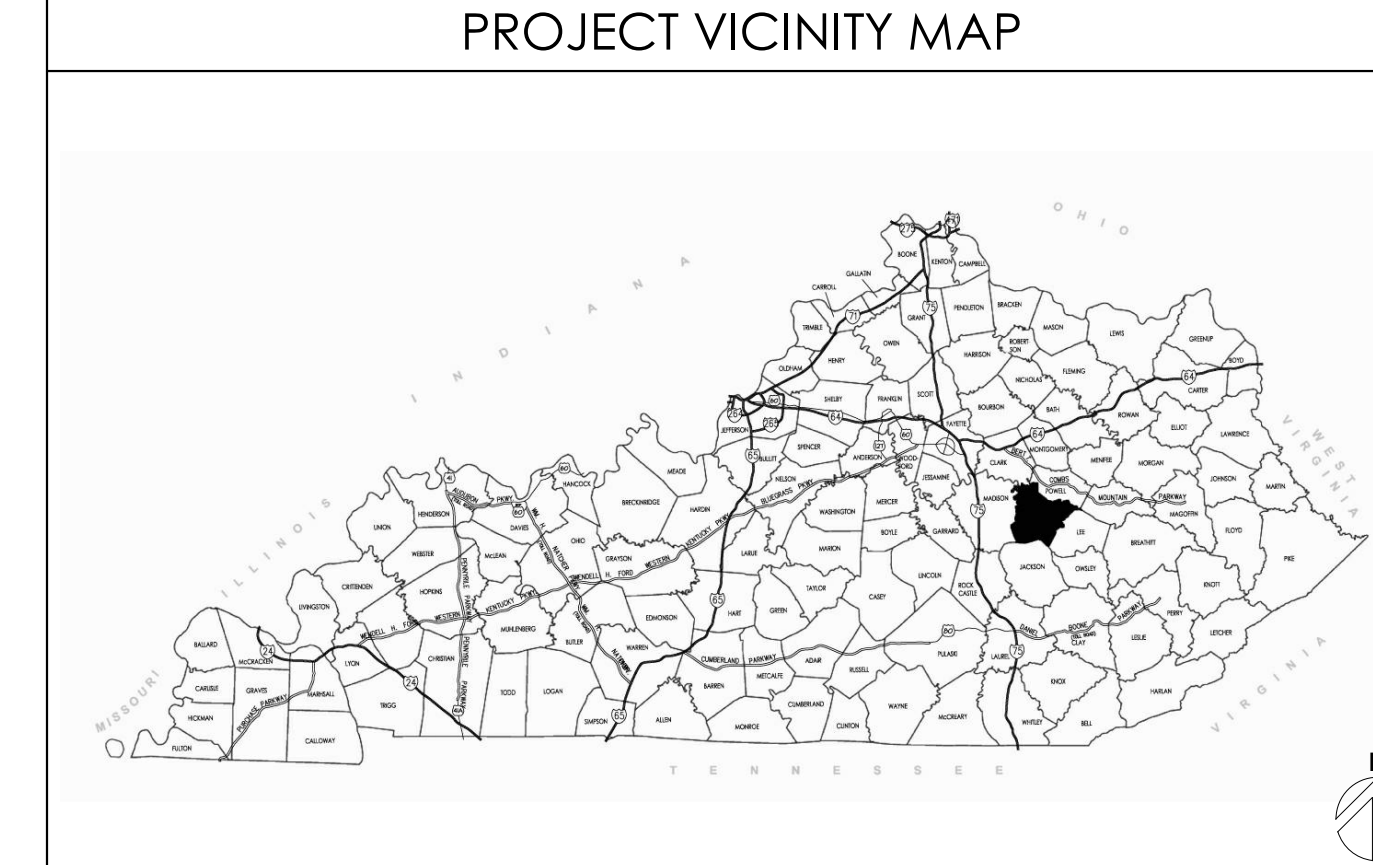
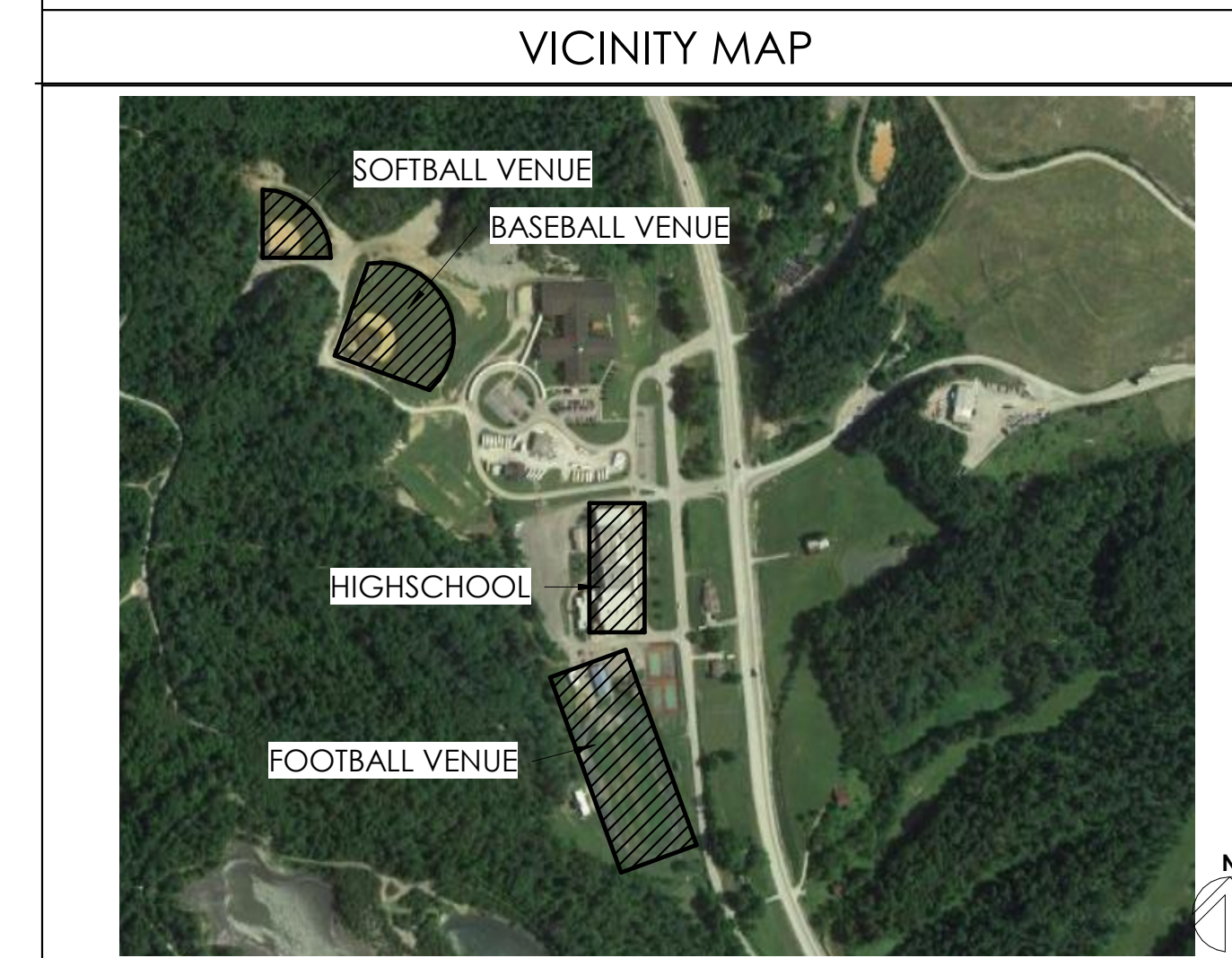
**STRUCTURAL ENGINEER:** STRUCTURAL DESIGN GROUP, INC.  
220 Great Circle Road, Suite 106 Nashville, Tennessee 37228  
p 615.255.5537

**M.E.P. ENGINEER:** CMTA, INC.  
2429 Members Way Lexington, Kentucky 40504  
p 859.253.0892

**HARDWARE CONSULTANT:** CALVERT INDEPENDENT HARDWARE SPECIFICATIONS, LLC  
307 Oakwood Circle Vine Grove, Kentucky 40175  
p 502.930.2039

**CONSTRUCTION MANAGER:** CODELL CONSTRUCTION COMPANY, INC.  
P.O. Box 17 Winchester, Kentucky 40392  
p 859.744.2222

**PROJECT SITE ADDRESS:**  
397 Engineer Rd,  
Irvine, Kentucky  
40336



INDEX OF DRAWINGS	
D1.0	DEMOLITION REFERENCE FLOOR PLANS - HIGH SCHOOL
D1.1	LOWER FLOOR DEMOLITION PLAN - AREA B
D1.2	FIRST FLOOR DEMOLITION - AREA A
D1.3	FIRST FLOOR DEMOLITION PLAN - AREA B
D1.4	SECOND FLOOR DEMOLITION PLAN - AREA A
D1.5	FIELD HOUSE DEMOLITION PLAN, ELEVATION, & ROOF PLAN
D3.1	ROOF DEMOLITION PLAN
A0.1	GENERAL ARCHITECTURAL DETAILS
A1.0	NEW WORK REFERENCE FLOOR PLANS - HIGH SCHOOL
A1.1	LOWER FLOOR PLAN - AREA A
A1.2	LOWER FLOOR PLAN - AREA B
A1.3	FIRST FLOOR PLAN - AREA A
A1.4	FIRST FLOOR PLAN - AREA B
A1.5	SECOND FLOOR PLAN
A1.6	FIRST FLOOR PLAN - ATHLETIC FACILITIES
A1.7	ENLARGED FLOOR PLANS - HIGH SCHOOL
A1.8	ENLARGED FLOOR PLANS - ATHLETIC FACILITIES
A1.9	BLEACHER PLANS
A1.10	BLEACHER SECTIONS
A2.0	SCHEDULES & DETAILS
A2.1	LOWER FLOOR PLAN - AREA B - INTERIORS
A2.2	FIRST FLOOR PLAN - AREA A - INTERIORS
A2.3	FIRST FLOOR PLAN - AREA B - INTERIORS
A2.4	SECOND FLOOR PLAN - AREA A & B - INTERIORS
A2.5	ATHLETIC FACILITIES - INTERIORS
A2.6	DETAILS & ELEVATIONS
A3.1	ROOF PLAN - HIGH SCHOOL, FIELDHOUSES, GREENHOUSE
A3.2	ROOF PLAN - DUGOUT, PRESSBOX
A4.1	ATHLETIC FACILITIES & GREENHOUSE ELEVATIONS
A5.1	ATHLETIC FACILITIES SECTIONS
A5.2	WALL SECTIONS - FOOTBALL ATHLETIC FACILITIES
A5.3	WALL SECTIONS - DUGOUT, PRESSBOX
A6.1	DOORS AND FRAME SCHEDULE
A6.2	OPENING ELEVATIONS & DETAILS
A7.1	REFLECTED CEILING PLANS - HIGH SCHOOL
A7.2	REFLECTED CEILING PLANS - ATHLETIC FACILITIES
A8.1	ALTERNATE #6 - TICKET BOOTH
A8.2	ALTERNATE #9 - MASONRY STAIN AT EXTG HIGH SCHOOL BRICK
U1.0	SITE UTILITIES -MECHANICAL DEMOLITION H.S.
U1.1	SITE UTILITIES -ELECTRICAL DEMOLITION FOOTBALL
U1.2	SITE UTILITIES -ALTERNATE #1 MECHANICAL DEMOLITIONS H.S.
U2.0	SITE UTILITIES -OVERALL
U3.1	SITE UTILITIES -FOOTBALL AREA
U3.2	SITE UTILITIES -BASEBALL/SOFTBALL AREA
U4.1	SITE UTILITIES -ALTERNATE #1 MEP HIGH SCHOOL
U4.2	SITE UTILITIES -ALTERNATE #1 FOOTBALL AREA
U5.1	SITE UTILITIES -SANITARY PROFILES
U5.2	SITE UTILITIES -SANITARY PROFILES
U5.3	SITE UTILITIES -ALTERNATE #1 SANITARY PROFILES
UE1.0	SITE UTILITIES - DEMOLITION
UE2.0	SITE UTILITIES - FOOTBALL AREA
UE2.1	SITE UTILITIES - BASEBALL/SOFTBALL AREA
P1.0	PLUMBING LEGEND
P2.0B	LOWER FLOOR PLUMBING DEMOLITION PLAN - AREA B
P2.1A	FIRST FLOOR PLUMBING DEMOLITION PLAN - AREA A
P2.1B	FIRST FLOOR PLUMBING DEMOLITION PLAN - AREA B
P2.2A	SECOND FLOOR PLUMBING DEMOLITION PLAN - AREA A
P2.2B	SECOND FLOOR PLUMBING DEMOLITION PLAN - AREA B
P3.0B	LOWER FLOOR UNDERSLAB PLUMBING PLAN - AREA B
P3.1A	FIRST FLOOR UNDERSLAB PLUMBING PLAN - AREA A
P3.1B	FIRST FLOOR UNDERSLAB PLUMBING PLAN - AREA B
P3.2A	SECOND FLOOR UNDERSLAB PLUMBING PLAN - AREA A
P3.2B	SECOND FLOOR UNDERSLAB PLUMBING PLAN - AREA B
P4.1A	FIRST FLOOR PLUMBING PLAN - AREA A
P4.1B	FIRST FLOOR PLUMBING PLAN - AREA B
P4.2A	SECOND FLOOR PLUMBING PLAN - AREA A
P4.2B	SECOND FLOOR PLUMBING PLAN - AREA B
P5.1	ATHLETIC FACILITIES PLUMBING PLANS
P6.0	SANITARY VENT RISER DIAGRAM
P6.1	SANITARY VENT RISER DIAGRAM
P7.0	SANITARY VENT RISER DIAGRAM
P7.1	SANITARY VENT RISER DIAGRAM
M1.0	MECHANICAL LEGEND
M2.0B	LOWER FLOOR MECHANICAL DEMOLITION PLAN - AREA B
M2.1A	FIRST FLOOR MECHANICAL DEMOLITION PLAN - AREA A
M2.1B	FIRST FLOOR MECHANICAL DEMOLITION PLAN - AREA B
M3.0B	LOWER FLOOR MECHANICAL PLAN - AREA B
M3.1A	FIRST FLOOR MECHANICAL PLAN - AREA A
M3.1B	FIRST FLOOR MECHANICAL PLAN - AREA B
M4.0A	LOWER FLOOR CONTROLS PLAN - AREA A
M4.0B	LOWER FLOOR CONTROLS PLAN - AREA B
M4.1A	FIRST FLOOR CONTROLS PLAN - AREA A
M4.1B	FIRST FLOOR CONTROLS PLAN - AREA B
M4.2A	SECOND FLOOR CONTROL PLAN - AREA A
M4.2B	SECOND FLOOR CONTROL PLAN - AREA B
M4.3	CONTROLS POINTS AND SEQUENCES
M4.4	CONTROLS POINTS AND SEQUENCES
M5.1	ATHLETIC FACILITIES MECHANICAL PLANS
M6.0	MECHANICAL SCHEDULES
M7.0	MECHANICAL DETAILS
E1.0	ELECTRICAL LEGEND
E2.0A	LOWER FLOOR ELECTRICAL DEMOLITION PLAN - AREA A
E2.0B	LOWER FLOOR ELECTRICAL DEMOLITION PLAN - AREA B
E2.1A	FIRST FLOOR ELECTRICAL DEMOLITION PLAN - AREA A
E2.1B	FIRST FLOOR ELECTRICAL DEMOLITION PLAN - AREA B
E2.2A	SECOND FLOOR ELECTRICAL DEMOLITION PLAN - AREA A
E2.2B	SECOND FLOOR ELECTRICAL DEMOLITION PLAN - AREA B
E2.3A	ATHLETIC FACILITIES ELECTRICAL DEMOLITION PLAN
E3.0A	LOWER FLOOR LIGHTING PLAN - AREA A
E3.0B	LOWER FLOOR LIGHTING PLAN - AREA B
E3.1A	FIRST FLOOR LIGHTING PLAN - AREA A
E3.1B	FIRST FLOOR LIGHTING PLAN - AREA B
E3.2A	SECOND FLOOR LIGHTING PLAN - AREA A
E3.2B	SECOND FLOOR LIGHTING PLAN - AREA B
E3.3	ATHLETIC FACILITIES LIGHTING PLANS
E4.0	LOWER FLOOR POWER/SYSTEMS PLAN
E4.1	FIRST FLOOR POWER/SYSTEMS PLAN
E4.2	ATHLETIC FACILITIES POWER/SYSTEMS PLANS
E5.0	ENLARGED ELECTRICAL PLANS
E6.0	ELECTRICAL RISER DIAGRAMS
E7.0	ELECTRICAL SCHEDULES
E7.1	ELECTRICAL SCHEDULES



HBC / KDE SET

COVER SHEET  
FOR:  
ESTILL COUNTY HIGH SCHOOL PHASE 7 RENOVATIONS  
ESTILL COUNTY SCHOOLS  
IRVINE, KENTUCKY

M.E.P. Engineer:  
CMTA, Inc.  
2429 Members Way  
Lexington, KY 40504  
p 859.253.0892  
Structural Engineer:  
Structural Design Group, Inc.  
220 Great Circle Rd. Suite 106  
Nashville, TN 37228  
p 615.255.5537

BG# 21-055

Project No: 2025  
Drawn By: JR / KM  
Rev'd By: PF

SHEET RELEASE	
1	
2	
3	
4	
5	
6	
7	
8	

COPYRIGHT © 2020  
CONSTRUCTION DOCUMENTS

**COVER SHEET**  
DATE ISSUED:  
FEBRUARY 2021







SITE DEVELOPMENT TAGS

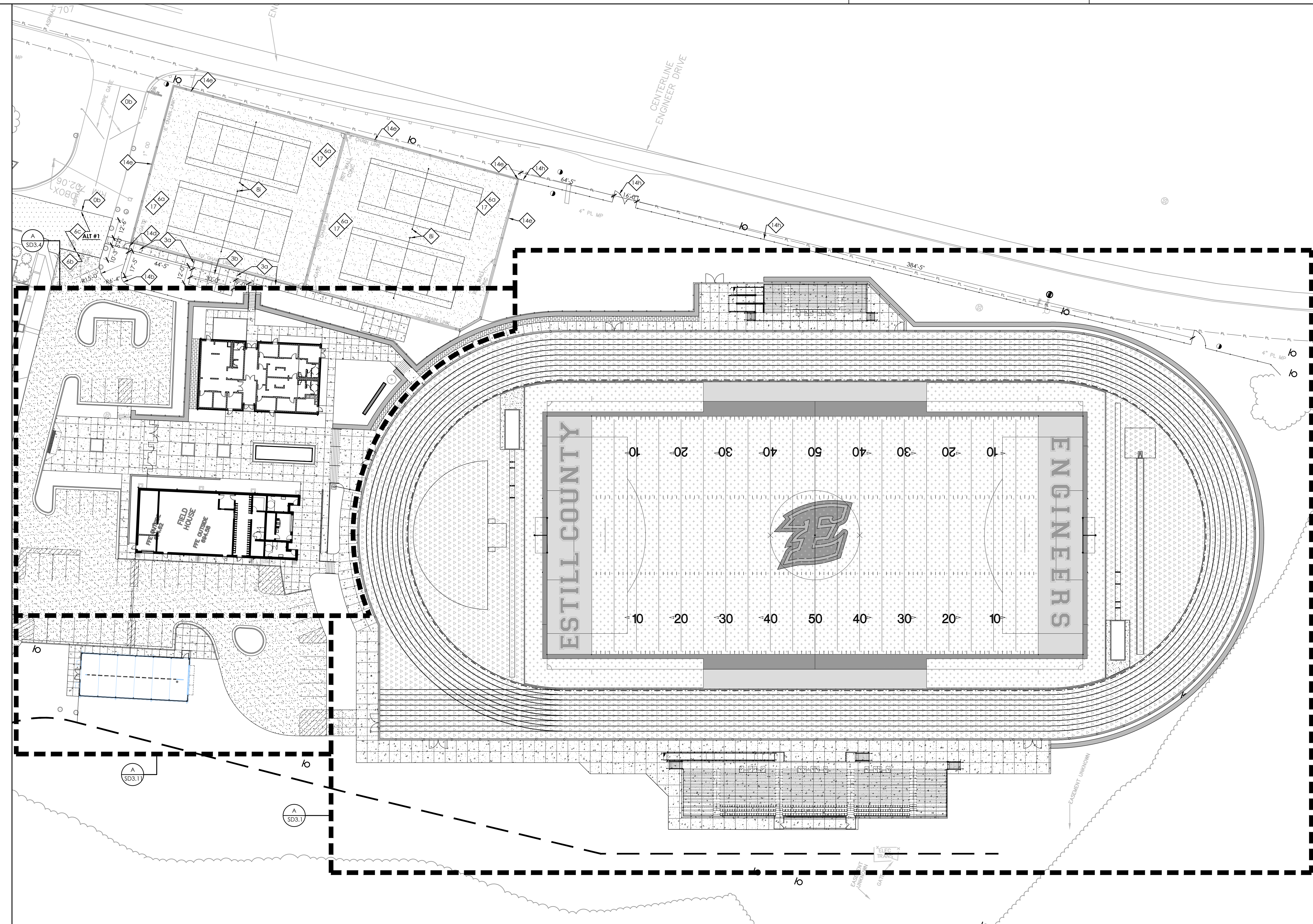
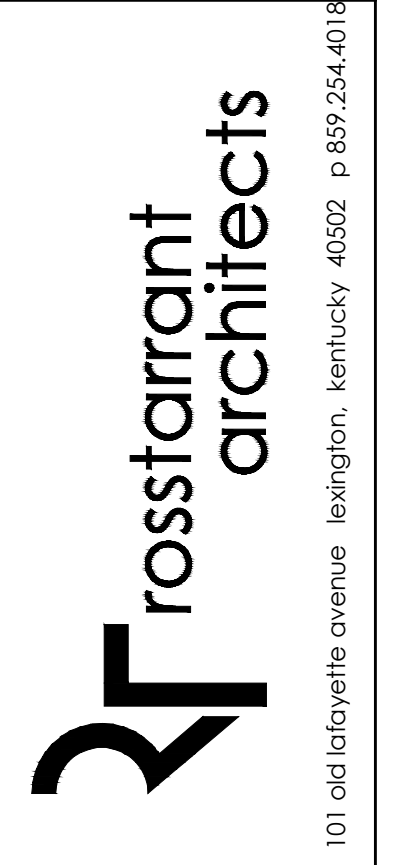
- 0 EXISTING TO REMAIN. PROTECT THROUGHOUT CONSTRUCTION.
  - (a) UTILITY LINE/STRUCTURE. REFER TO MEP DRAWINGS FOR ADDITIONAL INFORMATION.
  - (b) PAVING. PATCH/REPAIR WHERE DAMAGED BY CONSTRUCTION. SAW CUT TO PROVIDE SMOOTH TRANSITION.
  - (c) CONCRETE CURB.
  - (d) STORM STRUCTURE/LINE.
  - (e) TREE/VEGETATION.
  - (f) SPORTS EQUIPMENT
  - (g) FENCE.
  - (h) SIGN.
  - (i) BUILDING. SEE ARCHITECTURAL FOR ADDITIONAL INFORMATION.
- 1 GRAVEL PAVING. (323223) SEE DETAIL B/SD4.2
- 2 PERMEABLE CONCRETE PAVERS. (321413.19) SEE DETAIL C/SD4.2
- 3 CONCRETE PAVEMENT (321313, 321373)
  - (a) 4" CONCRETE WALK. SEE DETAIL D/SD4.2
  - (b) 4" CONCRETE WALK. SEE DETAIL D/SD4.2
  - (c) CONCRETE THRESHOLD. SEE DETAIL E/SD4.2
- 4 CONCRETE CURBS (321313, 321613, 321726)
  - (a) 8" FLUSH HEADER CURB AT SYNTHETIC TURF. SEE DETAIL L/SD4.3
  - (b) FLUSH CONCRETE HEADER CURB. SEE DETAIL F/SD4.2
  - (c) CONCRETE HEADER CURB. SEE DETAIL F/SD4.2
  - (d) CONCRETE CURB & GUTTER. SEE DETAIL G/SD4.2
  - (e) 1'-0" W x 1'-0" D CONCRETE FENCE BAND. SEE DETAIL H/SD4.2
  - (f) ACCESSIBLE DROPPED CURB, TYPE 'A' RAMP. SEE DETAIL I&J/SD4.2
  - (g) ACCESSIBLE DROPPED CURB, TYPE 'B' RAMP. SEE DETAIL I&J/SD4.2
- 5 CONCRETE STAIRS AND RAMP
  - (a) STAIR A. SEE DETAIL A&B/SD4.5
  - (b) STAIR B. SEE DETAIL C&D/SD4.5
  - (c) STAIR C. SEE DETAIL C&E/SD4.5
  - (d) STAIR D. SEE DETAIL F&G/SD4.5
  - (e) STAIR E. SEE DETAIL H&I/SD4.5
  - (f) STAIR F. SEE DETAIL J&K/SD4.5
  - (g) STAIR G. SEE DETAIL A&B/SD4.6
  - (h) RAMP. SEE DETAIL C&D/SD4.6
- 6 ASPHALT PAVEMENT (321216)
  - (a) ASPHALT RUNNING TRACK. SEE DETAIL A/SD4.2 & K/SD4.3
  - (b) LIGHT DUTY ASPHALT PAVEMENT. SEE DETAIL A/SD4.2
  - (c) HEAVY DUTY ASPHALT PAVEMENT. SEE DETAIL A/SD4.2
  - (d) **ALT #2** ASPHALT SEAL COAT.
- 7 RETAINING WALL (323223)
  - (a) SEGMENTAL RETAINING WALL. SEE DETAIL P/SD4.2
  - (b) CAST IN PLACE CONCRETE RETAINING WALL. SEE DETAIL Q/SD4.2
- 8 ATHLETIC EQUIPMENT (116833.14 & 116833.23)
  - (a) FOOTBALL GOAL POST PACK. SEE DETAIL G/SD4.3.
  - (b) SOCCER GOAL AND NET. SEE DETAIL G/SD4.3.
  - (c) FOOTBALL PYLON
  - (d) SOCCER CORNER FLAG
  - (e) LONG/TRIPLE JUMP TAKE OFF BOARD. SEE DETAIL A/SD4.3
  - (f) POLE VAULT BOX. SEE DETAIL C/SD4.3
  - (g) SOFTBALL TENSIONED NET BACKSTOP SYSTEM.
  - (h) BASEBALL TENSIONED NET BACKSTOP SYSTEM.
  - (i) TENNIS NET. SEE B&C/SD4.4
  - (j) LONG/TRIPLE JUMP LANDING PIT. SEE DETAIL B/SD4.3
- 9 MASONRY BACKSTOP WALL. SEE DETAIL R/SD4.2. (302000)
- 10 SHOT PUT PAD, TOE BOARD AND THROW FORM. SEE DETAIL L/SD4.3 (116833.43, 321613.33)
  - (a) SHOT PUT LANDING AREA. SEE DETAIL M/SD4.4
- 11 DISCUS CAGE, THROW FORM AND RING. SEE DETAIL E/SD4.3
- 12 SYNTHETIC TURF (321823.29). FINAL COLORS TO BE SUBMITTED FOR APPROVAL BY ARCHITECT AND OWNER
  - (a) FIELD AREA. COLORS TO BE ALTERNATING GREEN.
  - (b) CENTER FIELD LOGO. SEE DETAIL J/SD4.3
  - (c) END ZONE TEXT. SEE DETAIL I/SD4.3
- 13 **ALT #4** SYNTHETIC RUNNING TRACK SURFACING, STRIPING AND MARKINGS (321823.33)
  - (a) FOOTBALL FIELD NUMBERS AND MARKINGS, WHITE. SEE DETAIL H/SD4.3
  - (b) SOCCER FIELD MARKINGS. COLOR TO BE BLACK.
- 14 CHAIN LINK FENCING (323113)
  - (a) 3'-6" HEIGHT VINYL COATED CHAIN LINK FENCE. SEE DETAIL E/SD4.4
  - (b) 4'-0" HEIGHT VINYL COATED CHAIN LINK FENCE. SEE DETAIL F/SD4.4
  - (c) 4'-0" HEIGHT, 12'-0" WIDTH VINYL COATED CHAIN LINK DOUBLE GATE. SEE DETAIL G/SD4.4
  - (d) 4'-0" HEIGHT, 4'-0" WIDTH VINYL COATED CHAIN LINK GATE. SEE DETAIL H/SD4.4
  - (e) 10'-0" HEIGHT VINYL COATED CHAIN LINK FENCING. SEE DETAIL Q/SD4.4
  - (f) 3'-6" HEIGHT, 6'-0" WIDTH VINYL COATED CHAIN LINK GATE. SEE DETAIL H/SD4.2
  - (g) 3'-6" HEIGHT, 12'-0" WIDTH VINYL COATED CHAIN LINK GATE. SEE DETAIL G/SD4.2
  - (h) REINSTALL SALVAGED FENCING MESH. SET NEW POSTS AS SHOWN IN F/SD4.4
  - (i) 6'-0" HEIGHT GALVANIZED CHAIN LINK FENCE AND FENCE TOPPER.
  - (j) 6'-0" HEIGHT, 5'-0" WIDTH GALVANIZED CHAIN LINK GATE AND FENCE TOPPER.
- 15 ORNAMENTAL FENCING & GATES (323119)
  - (a) 4'-0" HEIGHT ORNAMENTAL FENCE. SEE DETAIL L/SD4.4
  - (b) 4'-0" HEIGHT, 4'-0" WIDTH ORNAMENTAL GATE. SEE DETAIL J/SD4.4
  - (c) 4'-0" HEIGHT, 12'-0" WIDTH ORNAMENTAL DOUBLE GATE. SEE DETAIL K/SD4.4
- 16 PAINTED PAVEMENT MARKINGS (321723.13)
  - (a) 4" PAVING STRIPING, WHITE
  - (b) 4" PAVING STRIPING, BLUE
  - (c) PAINTED DISABLED PARKING SYMBOL, BLUE. SEE DETAIL L/SD4.2
  - (d) 4" PAVING STRIPING, YELLOW
- 17 ATHLETIC COURT COLOR COATING (321823.53)
- 18 TRAFFIC SIGNAGE (101453)
  - (a) "VAN ACCESSIBLE ADA PARKING" SIGN. SEE DETAIL L/SD4.2
  - (b) "NO PARKING ANY TIME" SIGN. SEE DETAIL M/SD4.2
  - (c) "SERVICE VEHICLES AND STAFF ONLY" SIGN. SEE DETAIL M/SD4.2
- 19 RAILROAD TRACK/RELOCATED CABOOSE. SEE DETAIL O/SD4.2
- 20 RELOCATED RAILROAD CROSSING ARM. SEE MEP DRAWINGS FOR ADDITIONAL INFORMATION.
- 21 UTILITY STRUCTURE. SEE MEP DRAWINGS FOR ADDITIONAL INFORMATION.
- 22 **ALT #6** TENNIS COURT LIGHTING. SEE MEP FOR MORE INFORMATION.
- 23 FLAG POLE. (107500) SEE DETAIL N/SD4.3
- 24 CONCRETE WHEEL STOP. (321713) SEE DETAIL N/SD4.2
- 25 STRUCTURE. SEE ARCHITECTURAL AND STRUCTURAL DRAWINGS FOR ADDITIONAL INFORMATION.
  - (a) BUILDING CANOPY. SEE ARCHITECTURAL DRAWINGS FOR ADDITIONAL INFORMATION.

LEGEND

- CONCRETE PAVEMENT
- ASPHALT PAVEMENT
- HEAVY DUTY ASPHALT PAVEMENT
- ASPHALT PAVEMENT SEAL COAT
- SYNTHETIC TURF
- SYNTHETIC TRACK SURFACE
- ISOLATION JOINT

GENERAL SITE NOTES

1. THE SITE PLANS WERE PREPARED BASED UPON TOPOGRAPHIC SURVEYS BY ALAN W. LEAK, S&ME, 2020 LIBERTY ROAD, SUITE 105, LEXINGTON, KY, 40505. REFER TO SITE SURVEY SHEETS.
2. THE CONTRACTOR SHALL FIELD VERIFY ALL EXISTING SITE FEATURES AND CONDITIONS. REPORT ANY DISCREPANCIES TO THE ARCHITECT PRIOR TO THE START OF CONSTRUCTION.
3. THE ARCHITECT AND ARCHITECTS CONSULTANTS SHALL HAVE NO RESPONSIBILITY FOR THE DISCOVERY, PRESENCE, HANDLING, REMOVAL OR DISPOSAL OF, OR EXPOSURE OF PERSONS TO HAZARDOUS MATERIALS IN ANY FORM AT THE PROJECT SITE, INCLUDING BUT NOT LIMITED TO ASBESTOS, ASBESTOS PRODUCTS, POLYCHLORINATED BIPHENYL (PCB) OR OTHER TOXIC SUBSTANCES.
4. THE CONTRACTOR SHALL USE EXTREME CARE IN WORKING AROUND EXISTING OVERHEAD AND UNDERGROUND UTILITIES. MEASURES SHOULD BE TAKEN TO PROTECT ALL UTILITIES FROM DAMAGE DURING CONSTRUCTION.
5. SEE EROSION POLLUTION AND SEDIMENT CONTROL PLAN ON SD0.1 FOR RECOMMENDED BEST MANAGEMENT PRACTICES INFORMATION AND SEDIMENT CONTROLS.
6. REFER TO CONSTRUCTION MANAGER'S PLANS AND SPECIFICATIONS FOR INFORMATION REGARDING CONSTRUCTION SCHEDULE/SEQUENCING, CONSTRUCTION FENCING/STAGING, AND LEED SPECIFIC REQUIREMENTS.



SITE DEVELOPMENT AND LAYOUT PLAN  
 ESTILL COUNTY PHASE 7 HS RENOVATIONS  
 FOR:  
 ESTILL COUNTY SCHOOLS  
 IRVINE, KENTUCKY

M.E.&P Engineer  
 CM/EA, Inc.  
 2429 Members Way  
 Lexington, KY 40504  
 p 859.253.0892

Structural Engineer  
 Structural Design Group, Inc.  
 220 Great Circle Rd., Suite 106  
 Nashville, TN 37228  
 p 615.255.5337

BG# 21-055

Project No: 2025

Drawn By: \_\_\_\_\_

Rev'd By: \_\_\_\_\_

SHEET RELEASE	
1	
2	
3	
4	
5	
6	
7	
8	

COPYRIGHT © 2021  
 CONSTRUCTION DOCUMENTS

**SD1.1**

SITE DEVELOPMENT AND LAYOUT PLAN  
 DATE ISSUED:  
 FEBRUARY 24, 2021

SITE DEVELOPMENT TAGS

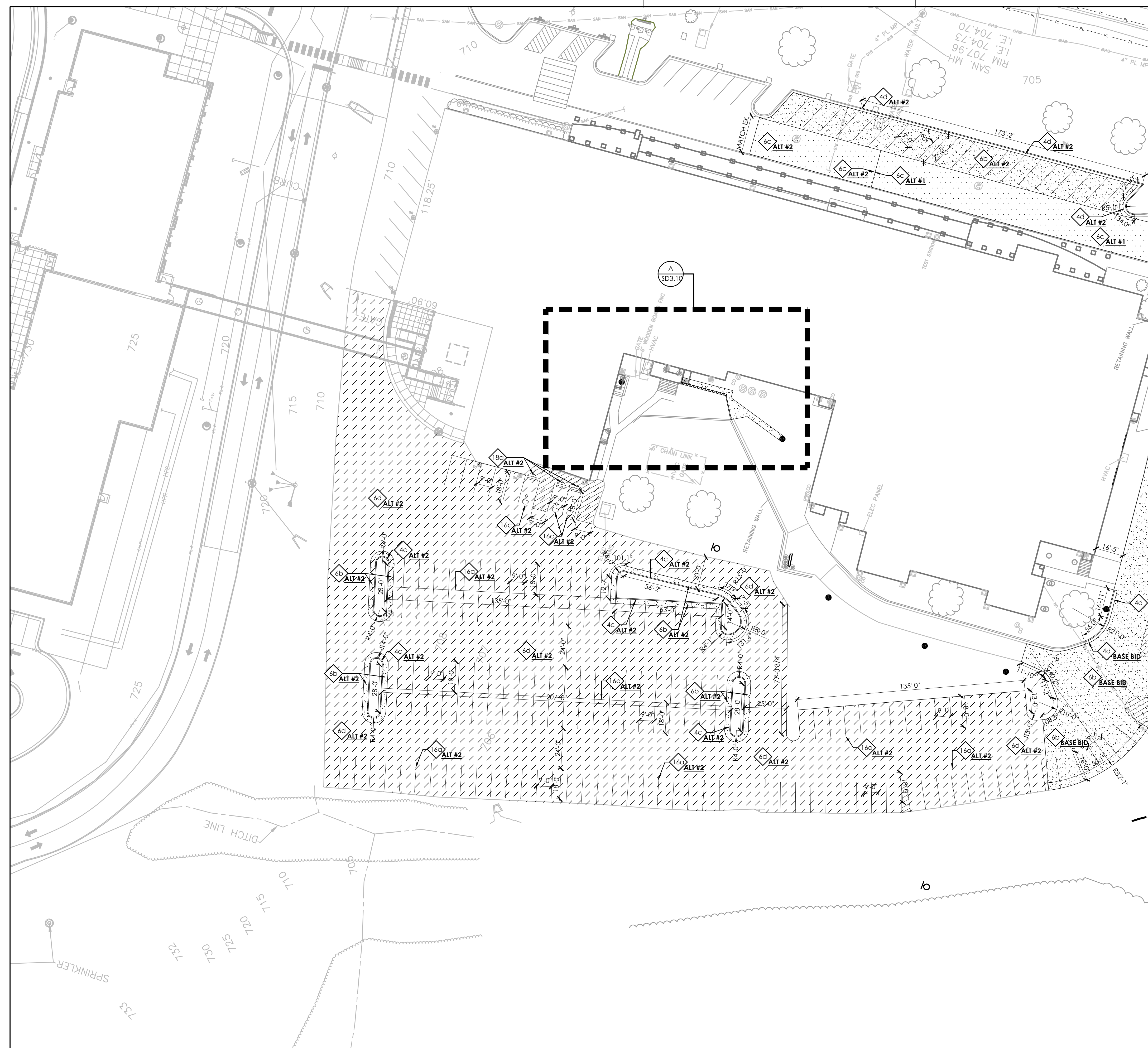
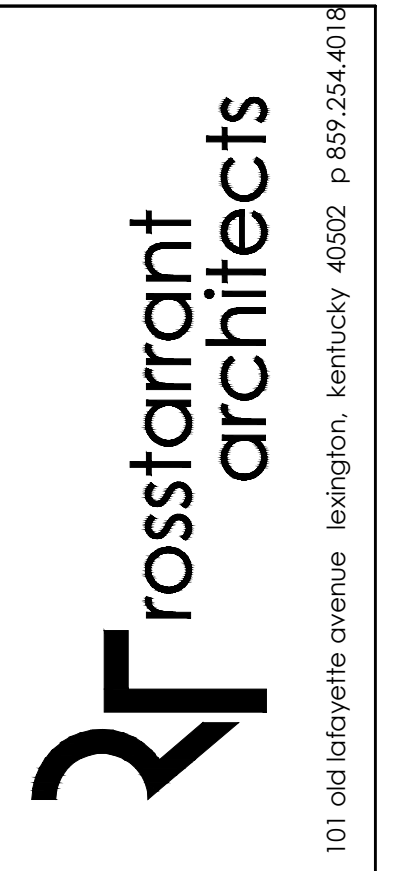
- 0 EXISTING TO REMAIN. PROTECT THROUGHOUT CONSTRUCTION.  
[a] UTILITY LINE/STRUCTURE. REFER TO MEP DRAWINGS FOR ADDITIONAL INFORMATION.  
[b] PAVING. PATCH/REPAIR WHERE DAMAGED BY CONSTRUCTION. SAW CUT TO PROVIDE SMOOTH TRANSITION.  
[c] CONCRETE CURB.  
[d] STORM STRUCTURE/LINE.  
[e] TREE/VEGETATION.  
[f] SPORTS EQUIPMENT  
[g] FENCE.  
[h] SIGN.  
[i] BUILDING. SEE ARCHITECTURAL FOR ADDITIONAL INFORMATION.
- 1 GRAVEL PAVING. (323223) SEE DETAIL B/SD4.2
- 2 PERMEABLE CONCRETE PAVERS. (321413.19) SEE DETAIL C/SD4.2
- 3 CONCRETE PAVEMENT (321313, 321373)  
[a] 4" CONCRETE WALK. SEE DETAIL D/SD4.2  
[b] 4" CONCRETE WALK. SEE DETAIL D/SD4.2  
[c] CONCRETE THRESHOLD. SEE DETAIL E/SD4.2
- 4 CONCRETE CURBS (321313, 321613, 321726)  
[a] 8" FLUSH HEADER CURB AT SYNTHETIC TURF. SEE DETAIL L/SD4.3  
[b] FLUSH CONCRETE HEADER CURB. SEE DETAIL F/SD4.2  
[c] CONCRETE HEADER CURB. SEE DETAIL F/SD4.2  
[d] CONCRETE CURB & GUTTER. SEE DETAIL G/SD4.2  
[e] 1'-0" W x 1'-0" D CONCRETE FENCE BAND. SEE DETAIL H/SD4.2  
[f] ACCESSIBLE DROPPED CURB. TYPE 'A' RAMP. SEE DETAIL I&K/SD4.2  
[g] ACCESSIBLE DROPPED CURB. TYPE 'B' RAMP. SEE DETAIL I&K/SD4.2
- 5 CONCRETE STAIRS AND RAMP  
[a] STAIR A. SEE DETAIL A&B/SD4.5  
[b] STAIR B. SEE DETAIL C&D/SD4.5  
[c] STAIR C. SEE DETAIL C&E/SD4.5  
[d] STAIR D. SEE DETAIL F&G/SD4.5  
[e] STAIR E. SEE DETAIL H&I/SD4.5  
[f] STAIR F. SEE DETAIL J&K/SD4.5  
[g] STAIR G. SEE DETAIL A&B/SD4.6  
[h] RAMP. SEE DETAIL C&D/SD4.6
- 6 ASPHALT PAVEMENT (321216)  
[a] ASPHALT RUNNING TRACK. SEE DETAIL A/SD4.2 & K/SD4.3  
[b] LIGHT DUTY ASPHALT PAVEMENT. SEE DETAIL A/SD4.2  
[c] HEAVY DUTY ASPHALT PAVEMENT. SEE DETAIL A/SD4.2  
[d] ALT #2 ASPHALT SEAL COAT.
- 7 RETAINING WALL (323223)  
[a] SEGMENTAL RETAINING WALL. SEE DETAIL P/SD4.2  
[b] CAST IN PLACE CONCRETE RETAINING WALL. SEE DETAIL Q/SD4.2
- 8 ATHLETIC EQUIPMENT (116833.14 & 116833.23)  
[a] FOOTBALL GOAL POST PACK. SEE DETAIL G/SD4.3.  
[b] SOCCER GOAL AND NET. SEE DETAIL G/SD4.3.  
[c] FOOTBALL PYLON  
[d] SOCCER CORNER FLAG  
[e] SOCCER CORNER FLAG  
[f] LONG/TRIPLE JUMP TAKE OFF BOARD. SEE DETAIL A/SD4.3  
[g] POLE VAULT BOX. SEE DETAIL C/SD4.3  
[h] SOFTBALL TENSIONED NET BACKSTOP SYSTEM.  
[i] BASEBALL TENSIONED NET BACKSTOP SYSTEM.  
[j] TENNIS NET. SEE B&C/SD4.4  
[k] LONG/TRIPLE JUMP LANDING PIT. SEE DETAIL B/SD4.3
- 9 MASONRY BACKSTOP WALL. SEE DETAIL R/SD4.2. (304200)
- 10 SHOT PUT PAD, TOE BOARD AND THROW FORM. SEE DETAIL L/SD4.3 (116833.43, 321613.33)  
[a] SHOT PUT LANDING AREA. SEE DETAIL M/SD4.3
- 11 DISCUS CAGE, THROW FORM AND RING. SEE DETAIL E/SD4.3
- 12 SYNTHETIC TURF (321823.29). FINAL COLORS TO BE SUBMITTED FOR APPROVAL BY ARCHITECT AND OWNER.  
[a] FIELD AREA. COLORS TO BE ALTERNATING GREEN.  
[b] CENTER FIELD LOGO. SEE DETAIL J/SD4.3  
[c] END ZONE TEXT. SEE DETAIL I/SD4.3  
[d] FOOTBALL FIELD NUMBERS AND MARKINGS. WHITE. SEE DETAIL H/SD4.3  
[e] SOCCER FIELD MARKINGS. COLOR TO BE BLACK.
- 13 ALT #4 SYNTHETIC RUNNING TRACK SURFACING, STRIPING AND MARKINGS (321823.33)
- 14 CHAIN LINK FENCING (323113)  
[a] 3'-6" HEIGHT VINYL COATED CHAIN LINK FENCE. SEE DETAIL E/SD4.4  
[b] 4'-0" HEIGHT VINYL COATED CHAIN LINK DOUBLE GATE. SEE DETAIL F/SD4.4  
[c] 4'-0" HEIGHT, 12'-0" WIDTH VINYL COATED CHAIN LINK GATE. SEE DETAIL G/SD4.4  
[d] 4'-0" HEIGHT, 4'-0" WIDTH VINYL COATED CHAIN LINK GATE. SEE DETAIL H/SD4.4  
[e] 10'-0" HEIGHT VINYL COATED CHAIN LINK FENCING. SEE DETAIL O/SD4.4  
[f] 3'-6" HEIGHT, 6'-0" WIDTH VINYL COATED CHAIN LINK GATE. SEE DETAIL H/SD4.2  
[g] 3'-6" HEIGHT, 12'-0" WIDTH VINYL COATED CHAIN LINK GATE. SEE DETAIL G/SD4.2  
[h] 4'-0" HEIGHT, 10'-0" WIDTH GALVANIZED CHAIN LINK GATE AND FENCE TOPPER.  
[i] 6'-0" HEIGHT GALVANIZED CHAIN LINK FENCE AND FENCE TOPPER.  
[j] 6'-0" HEIGHT, 5'-0" WIDTH GALVANIZED CHAIN LINK GATE AND FENCE TOPPER.  
[k] 4'-0" HEIGHT, 10'-0" WIDTH GALVANIZED CHAIN LINK GATE AND FENCE TOPPER.
- 15 ORNAMENTAL FENCING & GATES (323119)  
[a] 4'-0" HEIGHT ORNAMENTAL FENCE. SEE DETAIL L/SD4.4  
[b] 4'-0" HEIGHT, 4'-0" WIDTH ORNAMENTAL GATE. SEE DETAIL J/SD4.4  
[c] 4'-0" HEIGHT, 12'-0" WIDTH ORNAMENTAL DOUBLE GATE. SEE DETAIL K/SD4.4
- 16 PAINTED PAVING MARKINGS (321723.13)  
[a] 4" PAVING STRIPING, WHITE  
[b] 4" PAVING STRIPING, BLUE  
[c] PAINTED DISABLED PARKING SYMBOL, BLUE. SEE DETAIL L/SD4.2  
[d] 4" PAVING STRIPING, YELLOW
- 17 ATHLETIC COURT COLOR COATING (321823.53)
- 18 TRAFFIC SIGNAGE (101453)  
[a] "VAN ACCESSIBLE ADA PARKING" SIGN. SEE DETAIL L/SD4.2  
[b] "NO PARKING ANY TIME" SIGN. SEE DETAIL M/SD4.2  
[c] "SERVICE VEHICLES AND STAFF ONLY" SIGN. SEE DETAIL M/SD4.2
- 19 RAILROAD TRACK/RELOCATED CABOOSE. SEE DETAIL O/SD4.2
- 20 RELOCATED RAILROAD CROSSING ARM. SEE MEP DRAWINGS FOR ADDITIONAL INFORMATION.
- 21 UTILITY STRUCTURE. SEE MEP DRAWINGS FOR ADDITIONAL INFORMATION.
- 22 ALT #8 TENNIS COURT LIGHTING. SEE MEP FOR MORE INFORMATION.
- 23 FLAG POLE. (107500) SEE DETAIL N/SD4.3
- 24 CONCRETE WHEEL STOP. (321713) SEE DETAIL N/SD4.2
- 25 STRUCTURE. SEE ARCHITECTURAL AND STRUCTURAL DRAWINGS FOR ADDITIONAL INFORMATION.  
[a] BUILDING CANOPY. SEE ARCHITECTURAL DRAWINGS FOR ADDITIONAL INFORMATION.

LEGEND

- CONCRETE PAVEMENT
- ASPHALT PAVEMENT
- HEAVY DUTY ASPHALT PAVEMENT
- ASPHALT PAVEMENT SEAL COAT
- SYNTHETIC TURF
- SYNTHETIC TRACK SURFACE
- IJ ISOLATION JOINT

GENERAL SITE NOTES

1. THE SITE PLANS WERE PREPARED BASED UPON TOPOGRAPHIC SURVEYS BY ALAN W. LEAK, S&ME, 2020 LIBERTY ROAD, SUITE 105, LEXINGTON, KY, 40505. REFER TO SITE SURVEY SHEETS.
2. THE CONTRACTOR SHALL FIELD VERIFY ALL EXISTING SITE FEATURES AND CONDITIONS. REPORT ANY DISCREPANCIES TO THE ARCHITECT PRIOR TO THE START OF CONSTRUCTION.
3. THE ARCHITECT AND ARCHITECTS CONSULTANTS SHALL HAVE NO RESPONSIBILITY FOR THE DISCOVERY, PRESENCE, HANDLING, REMOVAL OR DISPOSAL OF, OR EXPOSURE OF PERSONS TO HAZARDOUS MATERIALS IN ANY FORM AT THE PROJECT SITE, INCLUDING BUT NOT LIMITED TO ASBESTOS, ASBESTOS PRODUCTS, POLYCHLORINATED BIPHENYL (PCB) OR OTHER TOXIC SUBSTANCES.
4. THE CONTRACTOR SHALL USE EXTREME CARE IN WORKING AROUND EXISTING OVERHEAD AND UNDERGROUND UTILITIES. MEASURES SHOULD BE TAKEN TO PROTECT ALL UTILITIES FROM DAMAGE DURING CONSTRUCTION.
5. SEE EROSION POLLUTION AND SEDIMENT CONTROL PLAN ON SD01 FOR RECOMMENDED BEST MANAGEMENT PRACTICES INFORMATION AND SEDIMENT CONTROLS.
6. REFER TO CONSTRUCTION MANAGER'S PLANS AND SPECIFICATIONS FOR INFORMATION REGARDING CONSTRUCTION SCHEDULE/SEQUENCING, CONSTRUCTION FENCING/STAGING, AND LEED SPECIFIC REQUIREMENTS.



SITE DEVELOPMENT AND LAYOUT PLAN  
 ESTILL COUNTY PHASE 7 HS RENOVATIONS  
 FOR:  
 ESTILL COUNTY SCHOOLS  
 IRVINE, KENTUCKY

M.E.&P Engineer  
 CMWA, Inc.  
 2429 Members Way  
 Lexington, KY 40504  
 p 859.253.0892  
 Structural Engineer  
 Structural Design Group, Inc.  
 220 Great Circle Rd., Suite 106  
 Nashville, TN 37228  
 p 615.255.5337

BG# 21-055  
 Project No: 2025  
 Drawn By:  
 Rev'd By:

SHEET RELEASE	
1	
2	
3	
4	
5	
6	
7	
8	

COPYRIGHT © 2021  
CONSTRUCTION DOCUMENTS

**SD1.2**  
 SITE DEVELOPMENT  
 AND LAYOUT PLAN  
 DATE ISSUED:  
 FEBRUARY 24, 2021

SITE DEVELOPMENT TAGS

- 0 EXISTING TO REMAIN. PROTECT THROUGHOUT CONSTRUCTION.
  - (a) UTILITY LINE/STRUCTURE. REFER TO MEP DRAWINGS FOR ADDITIONAL INFORMATION.
  - (b) PAVING. PATCH/REPAIR WHERE DAMAGED BY CONSTRUCTION. SAW CUT TO PROVIDE SMOOTH TRANSITION.
  - (c) CONCRETE CURB.
  - (d) STORM STRUCTURE/LINE.
  - (e) TREE/VEGETATION.
  - (f) SPORTS EQUIPMENT
  - (g) FENCE.
  - (h) SIGN.
  - (i) BUILDING. SEE ARCHITECTURAL FOR ADDITIONAL INFORMATION.
- 1 GRAVEL PAVING. (323223) SEE DETAIL B/SD4.2
- 2 PERMEABLE CONCRETE PAVERS. (321413.19) SEE DETAIL C/SD4.2
- 3 CONCRETE PAVEMENT (321313, 321373)
  - (a) 4" CONCRETE WALK. SEE DETAIL D/SD4.2
  - (b) 4" CONCRETE WALK. SEE DETAIL D/SD4.2
  - (c) CONCRETE THRESHOLD. SEE DETAIL E/SD4.2
- 4 CONCRETE CURBS (321313, 321613, 321726)
  - (a) 8" FLUSH HEADER CURB AT SYNTHETIC TURF. SEE DETAIL L/SD4.3
  - (b) FLUSH CONCRETE HEADER CURB. SEE DETAIL F/SD4.2
  - (c) CONCRETE HEADER CURB. SEE DETAIL F/SD4.2
  - (d) CONCRETE CURB & GUTTER. SEE DETAIL G/SD4.2
  - (e) 1'-0" W x 1'-0" D CONCRETE FENCE BAND. SEE DETAIL H/SD4.2
  - (f) ACCESSIBLE DROPPED CURB. TYPE 'A' RAMP. SEE DETAIL I&J/SD4.2
  - (g) ACCESSIBLE DROPPED CURB. TYPE 'B' RAMP. SEE DETAIL I&J/SD4.2

- 5 CONCRETE STAIRS AND RAMP
  - (a) STAIR A. SEE DETAIL A&B/SD4.5
  - (b) STAIR B. SEE DETAIL C&D/SD4.5
  - (c) STAIR C. SEE DETAIL C&E/SD4.5
  - (d) STAIR D. SEE DETAIL F&G/SD4.5
  - (e) STAIR E. SEE DETAIL H&I/SD4.5
  - (f) STAIR F. SEE DETAIL J&K/SD4.5
  - (g) STAIR G. SEE DETAIL A&B/SD4.4
  - (h) RAMP. SEE DETAIL C&D/SD4.6
- 6 ASPHALT PAVEMENT (321216)
  - (a) ASPHALT RUNNING TRACK. SEE DETAIL A/SD4.2 & K/SD4.3
  - (b) LIGHT DUTY ASPHALT PAVEMENT. SEE DETAIL A/SD4.2
  - (c) HEAVY DUTY ASPHALT PAVEMENT. SEE DETAIL A/SD4.2
  - (d) ALT #2 ASPHALT SEAL COAT.
- 7 RETAINING WALL (323223)
  - (a) SEGMENTAL RETAINING WALL. SEE DETAIL P/SD4.2
  - (b) CAST IN PLACE CONCRETE RETAINING WALL. SEE DETAIL Q/SD4.2
- 8 ATHLETIC EQUIPMENT (116833.14 & 116833.23)
  - (a) FOOTBALL GOAL POST PACK. SEE DETAIL G/SD4.3
  - (b) SOCCER GOAL AND NET. SEE DETAIL G/SD4.3
  - (c) FOOTBALL PYLON
  - (d) SOCCER CORNER FLAG
  - (e) LONG/TRIPLE JUMP TAKE OFF BOARD. SEE DETAIL A/SD4.3
  - (f) POLE VAULT BOX. SEE DETAIL C/SD4.3
  - (g) SOFTBALL TENSIONED NET BACKSTOP SYSTEM.
  - (h) BASEBALL TENSIONED NET BACKSTOP SYSTEM.
  - (i) TENNIS NET. SEE B&C/SD4.4
  - (j) LONG/TRIPLE JUMP LANDING PIT. SEE DETAIL B/SD4.3
- 9 MASONRY BACKSTOP WALL. SEE DETAIL R/SD4.2. (042000)

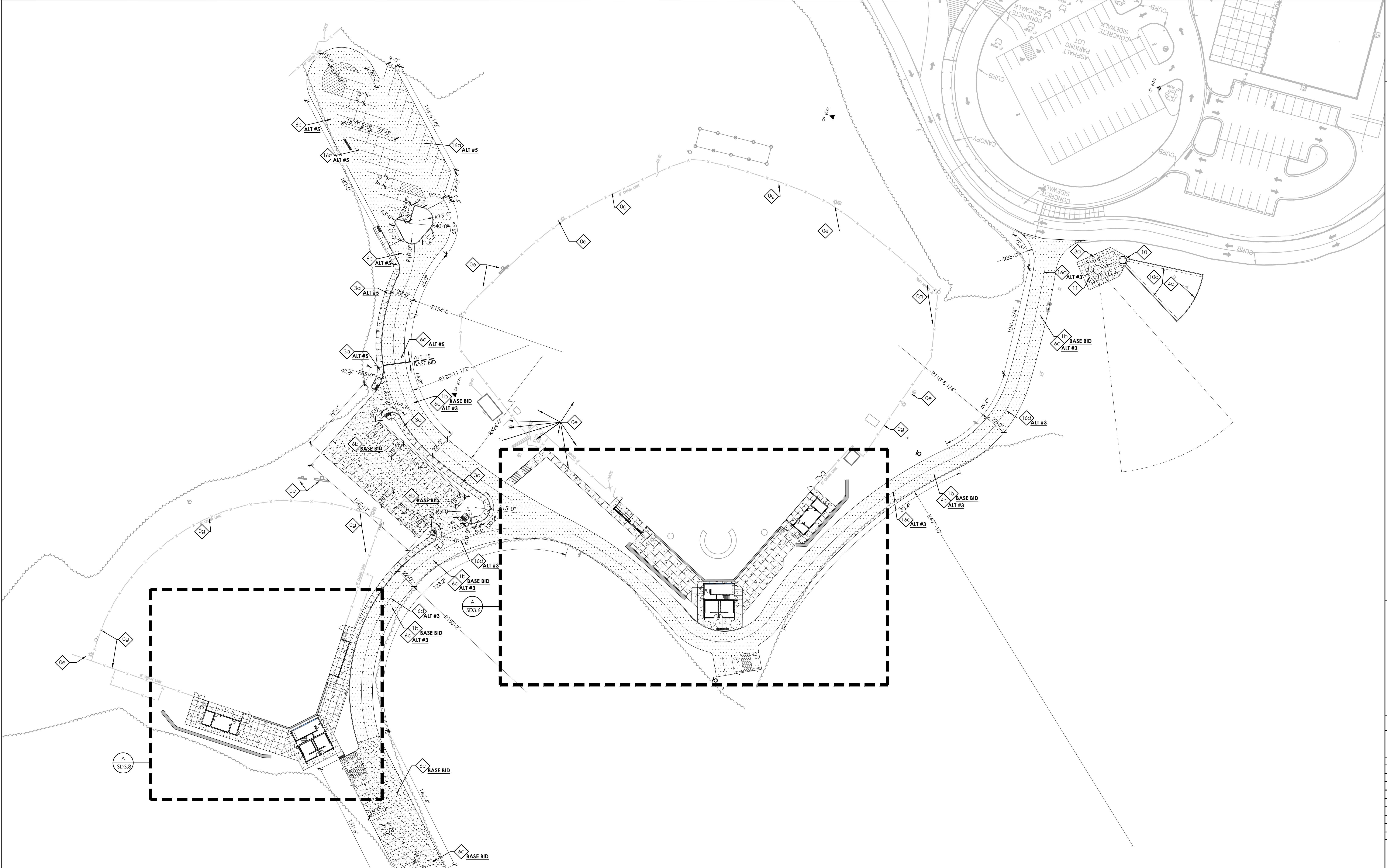
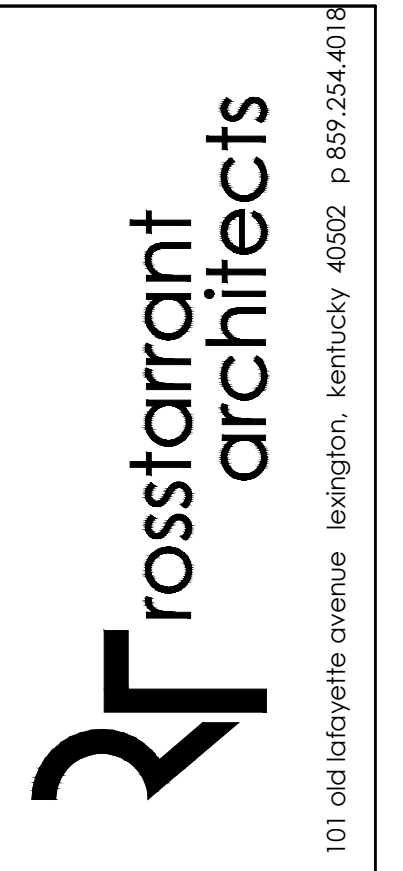
- 10 SHOT PUT PAD, TOE BOARD AND THROW FORM. SEE DETAIL L/SD4.3 (116833.43, 321613.33)
  - (a) SHOT PUT LANDING AREA. SEE DETAIL M/SD4.3
  - (b) DISCUS CAGE, THROW FORM AND RING. SEE DETAIL E/SD4.3
- 11 SYNTHETIC TURF (321823.29). FINAL COLORS TO BE SUBMITTED FOR APPROVAL BY ARCHITECT AND OWNER.
  - (a) FIELD AREA. COLORS TO BE ALTERNATING GREEN.
  - (b) CENTER FIELD LOGO. SEE DETAIL J/SD4.3
  - (c) END ZONE TEXT. SEE DETAIL I/SD4.3
  - (d) FOOTBALL FIELD NUMBERS AND MARKINGS. WHITE. SEE DETAIL H/SD4.3
  - (e) SOCCER FIELD MARKINGS. COLOR TO BE BLACK.
- 12 ALT #4 SYNTHETIC RUNNING TRACK SURFACING, STRIPING AND MARKINGS (321823.33)
- 13 CHAIN LINK FENCING (323113)
  - (a) 3'-6" HEIGHT VINYL COATED CHAIN LINK FENCE. SEE DETAIL E/SD4.4
  - (b) 4'-0" HEIGHT VINYL COATED CHAIN LINK FENCE. SEE DETAIL F/SD4.4
  - (c) 4'-0" HEIGHT, 12'-0" WIDTH VINYL COATED CHAIN LINK DOUBLE GATE. SEE DETAIL G/SD4.4
  - (d) 4'-0" HEIGHT, 4'-0" WIDTH VINYL COATED CHAIN LINK GATE. SEE DETAIL H/SD4.4
  - (e) 10'-0" HEIGHT VINYL COATED CHAIN LINK FENCING. SEE DETAIL O/SD4.4
  - (f) 3'-6" HEIGHT, 6'-0" WIDTH VINYL COATED CHAIN LINK GATE. SEE DETAIL H/SD4.2
  - (g) 3'-6" HEIGHT, 12'-0" WIDTH VINYL COATED CHAIN LINK GATE. SEE DETAIL H/SD4.2
  - (h) 6'-0" HEIGHT, 5'-0" WIDTH GALVANIZED CHAIN LINK GATE AND FENCE TOPPER.
  - (i) 6'-0" HEIGHT, 10'-0" WIDTH GALVANIZED CHAIN LINK GATE AND FENCE TOPPER.
  - (j) 6'-0" HEIGHT ORNAMENTAL FENCING & GATES (323119)
  - (k) 4'-0" HEIGHT ORNAMENTAL FENCE. SEE DETAIL L/SD4.4
  - (l) 4'-0" HEIGHT, 4'-0" WIDTH ORNAMENTAL GATE. SEE DETAIL J/SD4.4
  - (m) 4'-0" HEIGHT, 12'-0" WIDTH ORNAMENTAL DOUBLE GATE. SEE DETAIL K/SD4.4
- 14 PAINTED PAVEMENT MARKINGS (321723.13)
  - (a) 4" PAVING STRIPING, WHITE
  - (b) 4" PAVING STRIPING, BLUE
  - (c) PAINTED DISABLED PARKING SYMBOL, BLUE. SEE DETAIL L/SD4.2
  - (d) 4" PAVING STRIPING, YELLOW
- 17 ATHLETIC COURT COLOR COATING (321823.53)
- 18 TRAFFIC SIGNAGE. (101453)
  - (a) "VAN ACCESSIBLE ADA PARKING" SIGN. SEE DETAIL L/SD4.2
  - (b) "NO PARKING ANY TIME" SIGN. SEE DETAIL M/SD4.2
  - (c) "SERVICE VEHICLES AND STAFF ONLY" SIGN. SEE DETAIL M/SD4.2
- 19 RAILROAD TRACK/RELOCATED CABOOSE. SEE DETAIL O/SD4.2
- 20 RELOCATED RAILROAD CROSSING ARM. SEE MEP DRAWINGS FOR ADDITIONAL INFORMATION.
- 21 UTILITY STRUCTURE. SEE MEP DRAWINGS FOR ADDITIONAL INFORMATION.
- 22 ALT #8 TENNIS COURT LIGHTING. SEE MEP FOR MORE INFORMATION.
- 23 FLAG POLE. (107500) SEE DETAIL N/SD4.3
- 24 CONCRETE WHEEL STOP. (321713) SEE DETAIL N/SD4.2
- 25 STRUCTURE. SEE ARCHITECTURAL AND STRUCTURAL DRAWINGS FOR ADDITIONAL INFORMATION.
  - (a) BUILDING CANOPY. SEE ARCHITECTURAL DRAWINGS FOR ADDITIONAL INFORMATION.

LEGEND

- CONCRETE PAVEMENT
- ASPHALT PAVEMENT
- HEAVY DUTY ASPHALT PAVEMENT
- ASPHALT PAVEMENT SEAL COAT
- SYNTHETIC TURF
- SYNTHETIC TRACK SURFACE
- ISOLATION JOINT

GENERAL SITE NOTES

1. THE SITE PLANS WERE PREPARED BASED UPON TOPOGRAPHIC SURVEYS BY ALAN W. LEAK, S&ME, 2020 LIBERTY ROAD, SUITE 105, LEXINGTON, KY, 40505. REFER TO SITE SURVEY SHEETS.
2. THE CONTRACTOR SHALL FIELD VERIFY ALL EXISTING SITE FEATURES AND CONDITIONS. REPORT ANY DISCREPANCIES TO THE ARCHITECT PRIOR TO THE START OF CONSTRUCTION.
3. THE ARCHITECT AND ARCHITECTS CONSULTANTS SHALL HAVE NO RESPONSIBILITY FOR THE DISCOVERY, PRESENCE, HANDLING, REMOVAL OR DISPOSAL OF, OR EXPOSURE OF PERSONS TO HAZARDOUS MATERIALS IN ANY FORM AT THE PROJECT SITE, INCLUDING BUT NOT LIMITED TO ASBESTOS, ASBESTOS PRODUCTS, POLYCHLORINATED BIPHENYL (PCB) OR OTHER TOXIC SUBSTANCES.
4. THE CONTRACTOR SHALL USE EXTREME CARE IN WORKING AROUND EXISTING OVERHEAD AND UNDERGROUND UTILITIES. MEASURES SHOULD BE TAKEN TO PROTECT ALL UTILITIES FROM DAMAGE DURING CONSTRUCTION.
5. SEE EROSION POLLUTION AND SEDIMENT CONTROL PLAN ON SD0.1 FOR RECOMMENDED BEST MANAGEMENT PRACTICES INFORMATION AND SEDIMENT CONTROLS.
6. REFER TO CONSTRUCTION MANAGER'S PLANS AND SPECIFICATIONS FOR INFORMATION REGARDING CONSTRUCTION SCHEDULE/SEQUENCING, CONSTRUCTION FENCING/STAGING, AND LEED SPECIFIC REQUIREMENTS.



SITE DEVELOPMENT AND LAYOUT PLAN  
 ESTILL COUNTY PHASE 7 HS RENOVATIONS  
 FOR:  
 ESTILL COUNTY SCHOOLS  
 IRVINE, KENTUCKY

M.E.&P. Engineer  
 CM/EA, Inc.  
 2429 Members Way  
 Lexington, KY 40504  
 p 859.253.0892  
 Structural Engineer  
 Structural Design Group, Inc.  
 220 Great Circle Rd., Suite 106  
 Nashville, TN 37228  
 p 615.255.5537

BG# 21-055

Project No: 2025

Drawn By: \_\_\_\_\_

Rev'd By: \_\_\_\_\_

SHEET RELEASE	
1	
2	
3	
4	
5	
6	
7	
8	

COPYRIGHT © 2021  
CONSTRUCTION DOCUMENTS

**SITE DEVELOPMENT AND LAYOUT PLAN**  
 SCALE: 1" = 30'  
 SD1.3  
 DATE ISSUED:  
 FEBRUARY 24, 2021





